

# JSK Design & Engineering

## COMPANY PROFILE 2020

**RESPECT IS HOW TO TREAT EVERYONE, NOT JUST THOSE YOU WANT TO IMPRESS.**

## About us

In the year 2000, the founder Mr. Sattia @ Joe, had took upon himself a mission to start a Design and Engineering company like no other before. Focusing on the Quality of designs, Customer's satisfaction and Employees needs above everything else. With the finest designer's, the utmost attention to detail and the respect for the craft Mr. Sattia @ Joe designed his first project for Singapore SMRT, and has never stopped giving his best in this wonderful journey.

## Vision

To stay together as a strong knitted company with quality employees providing quality services and progressing together as one, to be recognized a top Design and engineering provider in the Asia Pacific region.

## Mission

Coming together is a beginning, staying together is a progress and working together is a success.



## Company Background

JSK DESIGN & ENGINEERING was incorporated in 2000 with a clear aspiration to be recognized as a provider of quality predictive design engineering services to the industry.

At the outset, we faced many challenges in gaining recognition and acceptance of merits and benefits of tailor made design engineering services over more traditionally times-based practices.

Today, with over 25 years of experience of providing customised design engineering services to the power and engineering industries, we offer clients made-to-order services that in many cases can be executed without costly equipment shutdowns and without compromising safety measures.

We are dedicated to ensuring that our clients obtain accurate diagnostic analysis of equipment by integrating various technologies and techniques. Through the use of our services, customers can realize substantial cost savings and higher system uptime and reliability.

## Biogas and Waste Water

JSK Design & Engineering is a Malaysian Registered Flagship Company located in heart of Johor Bahru, with its vested business interest in Water, Waste water & Renewable Energy sectors. JSKDE provides Consulting, Design, Engineering and Customized Turnkey Solutions (EPC) in Water & Waste water sectors to the Client. We also offer BOT projects and we are closely associated with the investors and technology providers for both Waste water & Biogas sectors.

We are very proud to say that we can offer total solutions in Waste water sector for any green field plant, upgradation or refurbishment projects anywhere in Malaysia. We provide solutions for both Municipal Waste water segment and Industrial Waste water segment. We cover wide range of industry spectrum and some of the major industries are given below.

We also provide Operation & Maintenance services for both Domestic and Industrial Waste water sector for short terms and long term basis. We undertake the waste water projects right from Waste water study to testing & commissioning including all necessary approval from DOE and meet DOE standards.

## Biogas and Waste Water

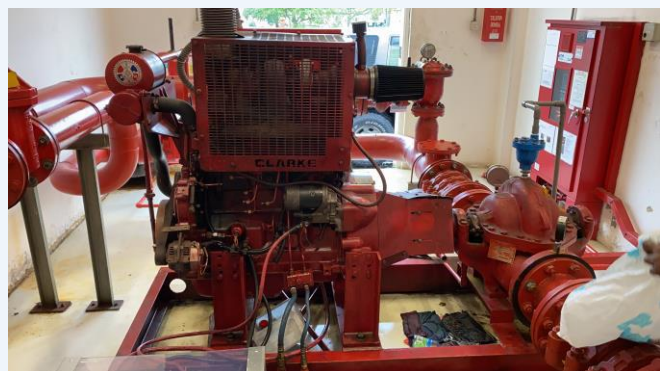
- a) Domestic Waste water Treatment Plants (STP)
- b) Palm oil (For Waste water BOD compliance and Biogas plants)
- c) Pulp & Paper
- d) Textile & Dying
- e) Distillery, Juice and Beverage Industries
- f) Food and Dairy Industries
- g) Electro Plating plants
- h) Zero liquid discharge plants
- i) Long term and short term operation and maintenance contracts
- j) Build- Operate & Transfer projects for selected industries
- k) Pilot plant and feasibility studies

With our strategic alliance and partnership with technology provider and investors We JSKDE brings to its customer at their doorstep the solution with the latest technology.

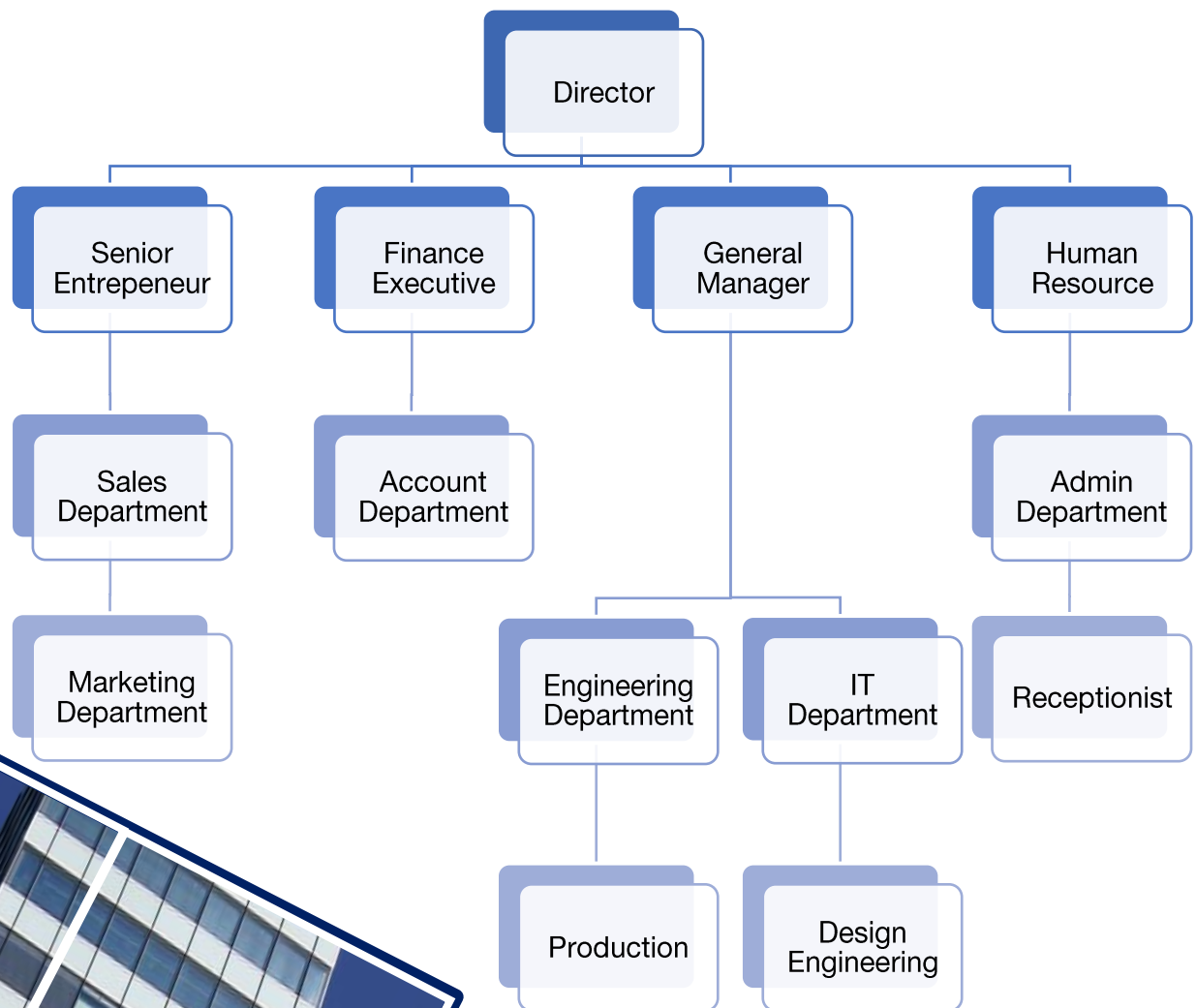
## Engine Installation / Service / Repair

We at JSK Design & Engineering are also involved in the installation of various types of heavy engines. Furthermore, we also provide engine servicing and also engine repairing services. Some of the types of Engines that are involved are as following:-

- a) Cummins
- b) Caterpillar
- c) GM Motors
- d) Clarke
- e) John Deer
- f) Ford
- g) Isuzu
- h) Fuso
- i) Nissan
- j) Toyota
- k) Yanmar
- l) Kubota



## Organization Chart





## Company Director

Mr. Sattia @ Joe started working in a design and engineering firm as young as 20, and has worked in a single company, single department mastering his craft for 25 years. Mr. Sattia has gained a huge confidence from his customers who trust him on his design decisions because of the respect and honesty he has towards his craft. He has worked on projects worth Millions for an example, SMRT, designing and building washing platform for

Singapore LRT. Besides that, Mr. Sattia @ Joe has also done works for Va Tech Wabag, building switch board panel for PUB Johor Waterworks. JML Singapore has also commissioned Mr. Sattia for customised design panels and has done multiple jobs with him. Mr. Sattia has dedicated his entire life to designing and building while maintaining the highest quality possible.



## What We Do Best

Providing customised design engineering services to the power and engineering industries, we offer clients made-to-order services that in many cases can be executed without costly equipment shutdowns and without compromising safety measures.



**MAIN SWITCHBOARD**



**BUS BAR DESIGN**



**DISTRIBUTION BOARD**



**AMF SWITCHBOARD**



**PANEL STRUCTURE**



**METERING PANEL**



**SUB-SWITCHBOARD**



**OUTDOOR FEEDER PILLAR**



**BIOGAS PLANT ON BOT BASIS**



**INDUSTRIAL WASTE WATER PLANTS**



**DOMESTIC WASTE WATER PLANTS**



**OPERATIONS & MAINTENANCE CONTRACTS**



**VARIOUS TYPES OF ENGINES INSTALLATION / SERVICE / REPAIRS**



**SHIPWRECK SPECIALIST**



**CUSTOM MADE HEAVY MACHINERY PARTS**



**CNC PUNCHING & LASER CUT**

# JSK Design & Engineering

## Clientele



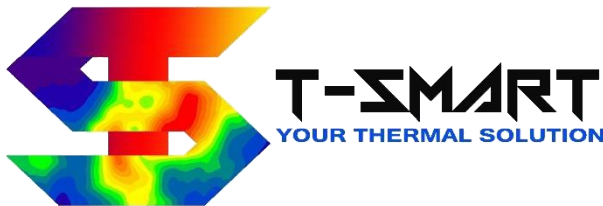
**PRECISION TECHNOLOGIES**

**MEINHARDT**



sustainable solutions. for a better life.

**OPUB** SINGAPORE'S  
NATIONAL  
WATER AGENCY



**ABB**

**MT** Your Partner in Innovation

**EATON**

 **TERASAKI**  
*Innovators in Protection Technology*



## Contact Us

---

Stay in touch with us. We're here to help and answer any question you might have. We look forward to hearing from you. Our teams are here to help.

Director

---

[sattia@jsk-de.com](mailto:sattia@jsk-de.com)

Sales and Marketing Department

---

[sales@jsk-de.com](mailto:sales@jsk-de.com)

Admin Department

---

[admin@jsk-de.com](mailto:admin@jsk-de.com)

General Enquiries

---

[inquiry@jsk-de.com](mailto:inquiry@jsk-de.com)